

KAPUNDA COMMUNITY GALLERY

PORTRAIT PAINTING WITH WATERCOLOUR TUTOR GERHARD RITTER

November 4 9.30am to 4pm at Art Room Kapunda High School West Tce., Kapunda

Fee \$40 Maximum participants 15. Bookings close October 21.

RECOMMENDED MATERIALS PAINT

Artist Quality Watercolour Paint
(preferably tubes, not pans)

1. Cadmium Red Light*
2. Alizarin Crimson*
3. Cadmium Yellow Light*
4. Raw Sienna
5. Burnt Sienna*
6. Burnt Umber*
7. Cerulean Blue
8. Ultramarine Blue*
9. Cobalt Blue*
10. Yellow Ochre*

* Indicates Required Colours

PAPER Artist Quality Watercolour Paper
Either Arches, Fabriano or Canson
300gsm Rough or Medium
By the Sheet or A4 or A3 Pad

BRUSHES Good Quality Synthetic
brushes. Suitable brushes (long brown
handles and black ferrules) can be found at
Bunnings.

No. 4 Round No. 10 Round
1/2 Inch Flat 1 Inch Flat Fine Liner

PALETTE Fairly large plastic palette with
small wells around the edge and good size
mixing areas in the middle.

Recommendations: Don't buy sets of very
cheap brushes, they don't hold the water/paint
and will leave loose hairs on your work. Cheap
paint and substandard paper will not work.
Inferior materials will disappoint.
Good quality paint, paper and brushes will give
the best and most satisfactory result and will
last the longest.

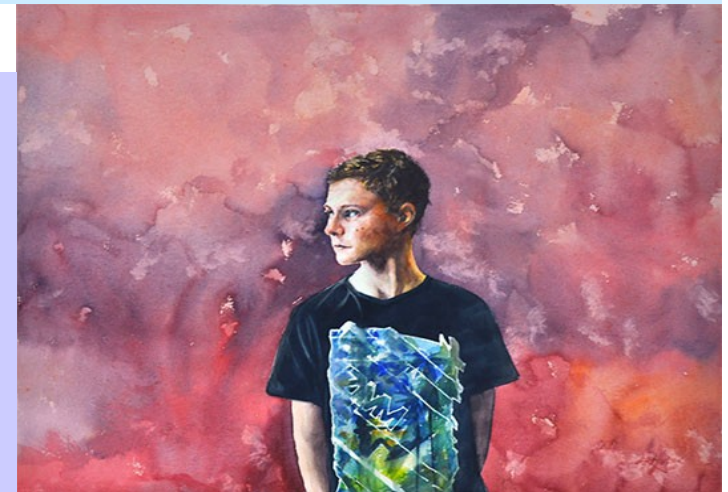
BOARD A sealed lightweight board about
36cmx55cm to tape A3 watercolour paper
onto. Recommend plywood, plastic or a
canvas board. Not MDF unless sealed as it
will stain the paper.

EXTRAS Water Containers, masking tape
12mm wide, tissues, rags,
A4 sketch book, eraser, ruler
Pencils: HB, 2B, 3B or softer.

Camera

YOUR LUNCH

Tea, coffee & biscuits provided



Please make payment at the Gallery or via cheque to: Kapunda Community Gallery 67-69 Main Street, Kapunda 5373.
Payment can also be made by direct debit. Contact: Anne Gonaus 8566-3159 or Maxine Donald 8566-3096.